



Walkwood

Church of England  Middle School

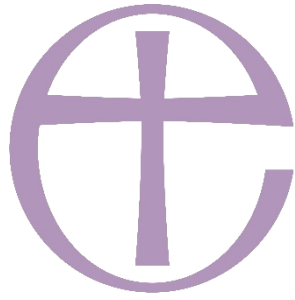


Love to Learn; Learn to Live; Live to Love.

The LORD says,

“I will guide you along the best pathway for your life. I will advise you and watch over you.”

Psalm 32:8



THE CHURCH
OF ENGLAND

“The vision, in line with the Church of England’s role as the established Church, is for the common good of the whole human community and its environment, whether national, regional or local. It is hospitable to diversity, respects freedom of religion and belief, and encourages others to contribute from the depths of their own traditions and understandings.”

Deeply Christian, Serving the Common Good, 2016

“I am God, your God, who teaches you how to live right and well. I show you what to do, where to go”. *Isaiah 48:17*

Key to the school’s vision is that every individual is created in the image of God, and from this belief springs the school’s outstanding attention to individual needs, both academic and pastoral.

Walkwood’s SIAMS Inspection, March 2017



We are proud to welcome you to

Walkwood

Church of England  Middle School



We are a middle school which educates pupils between the ages of 9 and 13 in a values-rich community. The school serves Walkwood and Headless Cross areas of Redditch, welcoming pupils from other parts of our town too.

As a state-funded academy, it is our vocation, duty and delight to provide the best possible education for each pupil.

We are a very friendly and focused school which uses specialist subjects as a key part of learning both knowledge and skills. We aim to inspire every child – whatever their abilities – to achieve their very best and make a valuable contribution to the Walkwood community. We want our pupils to **love to learn**.

Our school is not just about knowledge and skills; it's also about inspiring children to look at the world differently and about challenging them to be fascinated by lessons and subjects. In this way, we encourage our pupils to **learn to live**, preparing them for an adult life in a changing world and as such we seek to equip our children for the future. We want them to excel in school ... and in later life.



We are a Church of England school, which is fully inclusive of all faiths and beliefs. While Christian principles underpin all of the school's values, we know that these morals are shared by many faiths. We look for our pupils to take into their lives beyond our school, an outlook that allows them to **live to love** the experiences, people and spirituality that they encounter.

“Remember your Creator in the days of your youth”. Ecclesiastes 12:1

Therefore, we want pupils to:

Love to Learn,

Learn to Live,

Live to Love.



Our mission is to provide high quality, balanced education to pupils in an enquiring and supportive environment. Experienced and subject specialist teaching staff are dedicated to developing each individual pupil's well-being, whilst inspiring them to achieve their goals and excel in lessons.



Our School Values

Our Fruits of Faith are:



“I appointed you to go and bear fruit, fruit that will last, so that the Father will give you whatever you ask him in my name.”

John 15: 16

“God blesses those people who are like trees growing beside a stream, trees that produce fruit in season and always have leaves.”

Psalm 1: 3

Encouraging good behaviour

“I am God, your God, who teaches you how to live right and well. I show you what to do, where to go”. *Isaiah 48:17*



Walkwood Church of England Middle School actively opposes bullying, racism and discrimination. There are members of the college pastoral staff who will be able to support any issues quickly and sensitively. There are many things we can do to make a difference.

Praise and encouragement are the most important elements of developing positive relationships and friendships. We achieve this by awarding College Points and by recognising high quality work, which is celebrated during class time, college and whole-school gatherings.



We work through respectful partnerships

Not only is living and learning together, both lovingly and creatively, part of our mission, but we also work through partnerships.

This happens within the school, as staff cooperate across colleges and subjects. We also work with other educational providers.

Our partner high schools are key collaborators for children's education. We value our partnerships with the feeder first schools.

Funzone is our before school, after school and holiday time club partner (parents can book their children into the club from 7.30 am in the morning, until 6.00 pm in the evening).



The school day

All pupils are invited into school from 8.45 am and should be in classrooms by 8.50 am. School finishes at 3.30 pm.

Regular, structured homework supports and enriches the learning that goes on in the classroom. Homework club operates from 8.00 am, and for an hour at the end of the school day. There is no charge for the use of this club.



Organisation

On arrival to school, every pupil is placed into one of four colleges. These are as follows:

- Abberley
- Bredon
- Cleeve
- Malvern

The tutor groups have pupils from each of the four year groups. This helps sustain the family-feel of our school. Each tutor will get to know only 7 or 8 new pupils each year, and is supported in doing so by the older pupils in that group.

We aim to encourage and develop a joint sense of team spirit and belonging. Pupils will represent their college in a variety of academic, sporting and non – sporting competitions. Colleges also meet weekly in an act of worship, which involves celebration of achievements too.



Then I heard the voice of the Lord saying, ‘Whom shall I send, and who will go for us?’
And I said, ‘Here I am; send me!’ And he said, ‘Go ...’

Isaiah 6: 8 – 9

Curriculum



A rich, broad and balanced curriculum is offered across the four years and two key stages. The planning through the four years is strong, both within each subject and across different subjects. This builds subject partnerships of ideas or concepts, which support pupils’ learning. In Year 5, pupils have a smaller number of teachers, which eases the transition from the first school curriculum.

Areas of the curriculum are:

English

Mathematics

Science

Spiritual & Social Education

History

Geography

French

Music

Design Technology

Art

ICT

Physical Education

Drama



Enriched Curriculum



The curriculum is enhanced for pupils within school, the local community and the wider world. We provide an abundance of opportunities at Key Stage 2 and 3. These have included theatre trips, performing in the choir and orchestra, themed 'Deep Days', residential trips, and other opportunities that present themselves.

We also have specific Deep Days during the academic year where the whole school is involved. These are generally based within the vertical tutor groups and can cover aspects of faith and personal well-being.



Inclusivity in learning

All children have different skills, temperaments and talents. We aim to identify gifted and talented children and provide regular, stimulating and enriching lessons and activities appropriate to their needs.

Walkwood has adopted the practice of Provision Mapping to support pupils with special needs. This requires the school to identify the needs of a pupil and then match a resource or provision to meet their need.

There are a variety of methods used to support pupils with special needs including:

- Individual timetables
- Extra support from teaching assistants in lessons
- Handwriting programme
- Speech and language intervention
- Spelling intervention
- Emotional support



Specialist teachers and facilities

One of the strengths of Walkwood Church of England Middle School is that we employ specialist teachers and have subject-specific facilities. This means that these specialist teachers have a greater depth of expertise and enthusiasm for their subjects.

We have:

- 3 Science labs and 2 prep. rooms
- 2 full ICT rooms, with three further 'break out' ICT areas
- Pupil photocopiers and printers
- Newly refurbished changing rooms with individual showers
- Two hard play areas
- A four – pitch sports field
- Library and ICT resources
- A Food Technology room
- Workshops for Resistant Materials and Textiles
- A specialist Music base with separate practice rooms
- A dedicated Art facility
- Two school halls
- External 'quiet areas' for the younger and older pupils
- Lockers for every child (at no cost)
- On – site canteen for hot and cold food preparation



Jesus said “I am come that they might have life, and that they might have it more abundantly.” *John 10:10*

School meals



School lunches are prepared freshly on site. Pupils can choose to purchase a range of delicious hot and cold meals and snacks during morning break and lunchtime. The menu is altered on a daily basis and there is always a vegetarian option. Pupils may choose to bring a packed lunch to school. Menu and payment options can be seen on the website.



Partnership with parents

We believe that a good partnership between school and home is an essential element of effective education. Children's teachers, tutors and pastoral managers can be available to see parents before or after school. It is best to telephone ahead to ensure that a staff member will be available.

Our weekly newsletter, 'The Insider' informs parents about children's achievements and events in school.

The Insider

Clubs and activities



Walkwood has a wide choice of after-school clubs organised for pupils, and the possibilities change each term. Most school clubs run from 3.30 pm until 4.45 pm, and there is no charge made for these activities.

There are also clubs that take place during the school lunch time.

The current provisions can be viewed on our website:

<http://www.walkwoodms.worcs.sch.uk/Clubs>

Sport

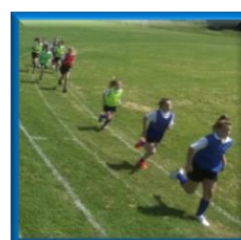
Walkwood has an impressive record of sporting achievement both at district, county and national levels. There are regular sports fixtures and competitions in a variety of sports. No payment is required to take part. Sports clubs include:



netball
rounders
rugby
cricket

football
athletics
basketball
gymnastics

hockey
cross-country running
dance



The LORD says,
“I will guide you along the best pathway for your life. I will advise you and watch over you.” *Psalm 32:8*

Music



Music is a strength at Walkwood. Our orchestra and choir practise weekly and perform at many concerts throughout the year at various venues.

Pupils who wish to play a specific instrument can have individual lessons. The school has close links with Severn Arts and peripatetic music teachers visit to provide instrumental tuition.



Funzone

Funzone Out of School Club runs before and after school from (7.30 am – 6.00 pm) and weekdays during school holidays.

Funzone is based at Walkwood Church of England Middle School and, during school term time, cares mainly for children at Walkwood and The Vaynor First School. During the holidays, children from any school may attend.

In January 2015, Ofsted rated the club as Good: ‘Children are happy and enjoy themselves at this well-organised club where the focus is on learning through play. Staff are passionate about providing children with quality play opportunities. They provide children with a wealth of experiences in order to support their all-round development.’

In the morning, breakfast is offered, a light snack such as toast, fruit, crumpets or cereal. Children can come to Funzone after they have been to Walkwood School evening clubs, and are offered an area where they can catch up with homework, make themselves a hot drink and snack, or just relax. A range of activities are provided every night and trips and special events are held during school holidays weeks.

If you are looking for out of school care for your child, please give Funzone a call on 07703 610788 or email Funzoneltd@hotmail.co.uk. Otherwise you are welcome to pop in at any time to visit.

Admissions

To view Walkwood's policy on admissions please visit the school website <http://www.walkwoodms.worcs.sch.uk/Admissions>.

If your child will be joining Walkwood as a Year 5 pupil in September, use also www.worcestershire.gov.uk/schooladmissions.

Parents who are thinking of applying for a place during the academic year are invited to look around Walkwood Church of England Middle School, so making an appointment to do so is not a problem.





Walkwood

Church of England  Middle School

Love to Learn; Learn to Live; Live to Love.


Ofsted
Good
Provider

- ✓ An impressive ethos pervades the school. It has nourished a very positive climate for learning in the school, which helps all pupils to thrive.
- ✓ Pupils are polite, friendly and respectful of each other's views. They are proud of their school and the work that they do.
- ✓ During their time at school, pupils develop into confident, hardworking and articulate pupils.

 THE CHURCH
OF ENGLAND

OUTSTANDING

- ✓ The inclusive vision of the school ensures that all children are supported in their personal well-being and academic achievement.
- ✓ The school's inclusive Christian ethos ensures that children have an outstanding understanding of and respect for difference and diversity.
- ✓ Christian values and a vision rooted in scripture underpin every area of school life.

